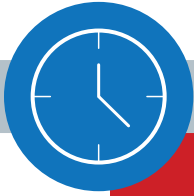
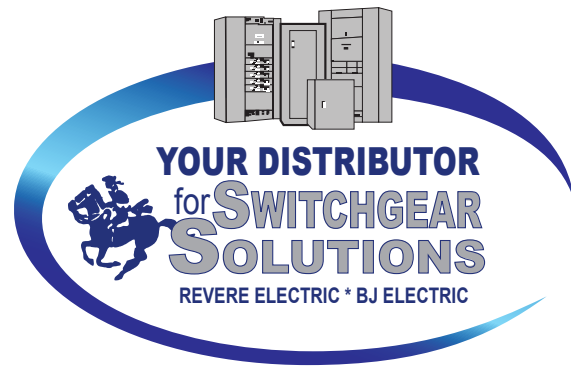


Industry Leading Switchgear Solutions and Services...

Factory trained specialists who average over **20 years of experience** — performing the activities of a mfg, only better and quicker.

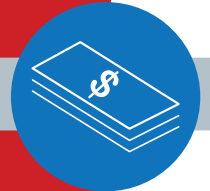


Timely and Accurate Quotes

- No surprises...We know what you need
- Easy to understand quote summary
- 'In House' quotations team • Revere generated layout drawings

Competitive Pricing

- Value engineering suggestions provided by Revere Solution Specialists
- Switchgear 'packaging' reduces overall cost



Availability: \$1M in Switchgear Inventory

- Panelboards 100A thru 600A on the shelf, MCB or MLO, 1Phase or 3Phase, 120/208V thru 277/480V
- CT cabinets, transformers, disconnects N1, N3, N4X
- Enclosed control including motor starters, combo starters with all accessories (HOA, CPT, pilot lights, aux contacts)

Expedited Submittal Drawings and Coordination Studies

- Revere generated submittals save you weeks in the review process



Dedicated Switchgear Specialists Manage Your Job Utilizing Proprietary Gear Trakker

- Weekly status updates • Protects against errors



**REVERE
ELECTRIC
SUPPLY Co.**
*Messenger
of Service*

Gear Central Group Contact Information

312-738-4327 (Chicagoland)

262-347-3152 (Milwaukee)

608-252-4872 (Madison)

www.revereelectric.com

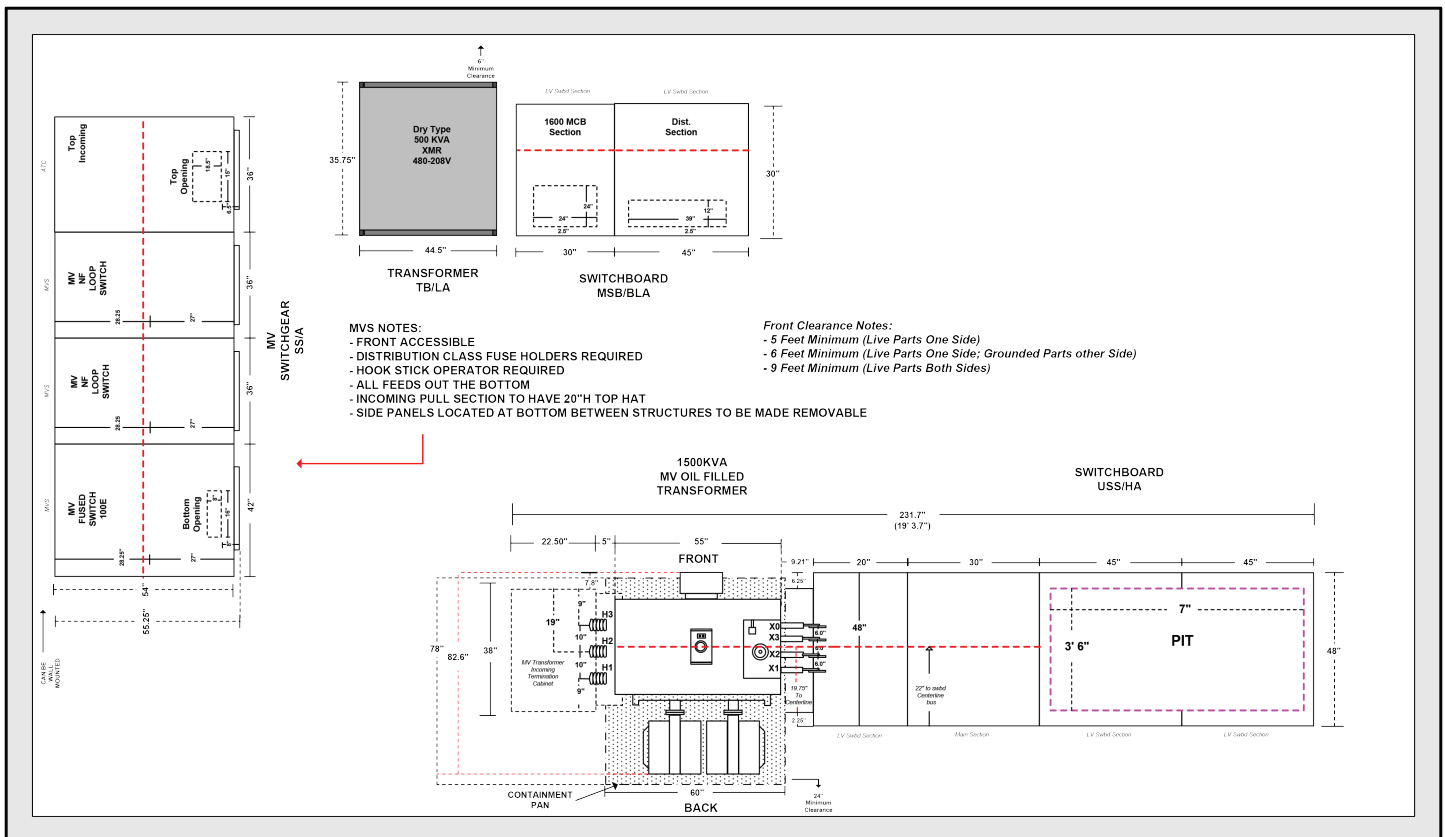
SWITCHGEAR QUOTATION

Material Summary

- 1 – 480V 3000A CT Cabinet
- 1 – 480V 2500A CT Cabinet
- 2 – CT Rated Meter Sockets
- 1 – 480V 2500A SWBD w/ SQD PM820 Meter
- 1 – 70A NEMA 1 3R Temporary Disconnect
- 5 – Enclosed Breakers
- 2 – Isolated Transformers
- 2 – Fusible Coordination Panelboards
- 1 – 150A 4 Pole ATS
- 24 – Safety Switches
- 9 – SPDs
- 1 – Power System Study
- 1 – 480V 3000A SWBD w/ SQD PM820 Meter
- 1 – 2000A NEMA 3R Temporary Disconnect
- 1 – Generator Tap Box
- 7 – Standard Transformers
- 21 – Breaker Panelboards
- 6 – Add-on Breakers for Existing Panels
- 4 – 200A Company Switches
- 27 – Motor Rated Switches
- 1 – 18kVA UPS
- All Required Fuses

Total Net

Price.....\$200,000.00



Gear Central Group Contact Information

312-738-4327 (Chicagoland)

262-347-3152 (Milwaukee)

608-252-4872 (Madison)

www.reverselectric.com

